



KLASSIC TOOL CRIB



Dear Valued Customers,

The Klassic Tool Crib team is proud to present our latest catalog. Our dedicated team has over 50 years experience in supplying professional tools to the Aviation, Automotive, Sheet Metal, and Marine industries. We have worked hard to provide you with one of the most complete catalogs of its kind.

Our team of professionals prides itself on providing prompt knowledgeable service and high quality tools, at a great price. We encourage you to contact us for not only the common items, but also the difficult and "impossible to find" items. We also look forward to providing you with technical expertise for your fabricating, customizing, assembling and restoration projects.

In addition to the items shown in this, catalog Klassic Tool Crib is a full-line distributor of the tools manufacturers featured. We have a very large parts department with experienced mechanics that can repair or rebuild your tools and equipment back to the original manufacturers specifications.

At KlassicToolCrib.com we not only offer the leading professional tools, but have created a place for you to view numerous metal forming videos and demonstrations of the equipment and tools we deliver.

Our office is conveniently located near the Detroit Metropolitan Airport and is ideal for quick shipping throughout the world.

We look forward to working with you.

"Circling the World with Tools for Fabricating, Customizing and Restoration"

Klassic Tool Crib

Toll-Free: (866) 760-6931 Phone: (734) 947-8100

Fax: (734)947-8101 Email: Sales@KlassicToolCrib.com

Mailing and Factory Address: 9350 Harrison - Romulus, MI 48174

Cage Code: 59GR5



Eckold KF675 & KF470 Kraffformer

KF675



The KF675 and KF470 have the largest capacities in the Eckold Kraffformer program. The combination of sturdiness and strength with highly precise working features make these machines indispensable for aircraft, ship, or rail car building worldwide. Both are electronically operated, extremely sturdy and durable which allows the user to deliver great pressure combined with very sensitive control. Their high degree of versatility is due to the very wide range of quick change tooling. Specify required voltage when ordering.

KF470



Model #	Reach x Gap	Aluminum Capacity	Steel Capacity	Stainless Capacity	Shipping Weight
KF470	18" x 18 1/2"	0.157	0.118	0.079	3,170 lbs
KF675	26 1/2" x 17 3/4"	0.236	0.236	0.157	5,500 lbs

Toll Free 866.760.6931 Local 734.947.8100 Fax 734.947.8101 Email Sales@KlassicToolCrib.com

Eckold KF324 and KF340 Krafftormer



KF324

The **KF324** is driven by an electric motor at 400 strokes per minute. (Specify voltage when ordering). The KF324 has a hand wheel for the jaw pressure adjustment. The jaws can be replaced in a matter of seconds so that you can quickly change from task to task. Mounted on heavy duty casters which allow you to move the unit around the shop or out of the way when not in use. These units are extremely popular in auto restoration and fabrication shops, as well as throughout the aviation industry.

The **KF340** Krafftormer has an adjustable operating speed from 250 to 550 strokes per minute. The lower speeds are ideal for shrinking and straightening, while the higher speeds are best suited for stretching, doming and planishing. This unit has ample power to work steel up to .118" and aluminum to .157" thicknesses. The foot pedal adjusts the jaw pressure and also has an emergency stop function. As with all Eckold machines, the new KF340 has a quick change jaw feature and accepts all the jaws and accessories used with the KF324 machine.



KF340

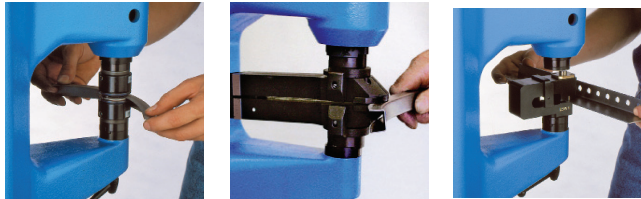
Model #	Reach x Gap	Aluminum Capacity	Steel Capacity	Stainless Capacity	Shipping Weight
KF324	14" x 9 1/2"	0.098	0.078	0.059	1,125 lbs
KF340	14" x 9 1/2"	0.157	0.118	0.079	1,335 lbs

Eckold KF170PDK Krafftormer



The KF170PDK is the smallest in the Krafftormer program. Unlike the larger models, this machine is air operated and is equipped with both continuous and single stroke operation. Extraordinary precise pre-selection and control of pressure make this Krafftormer ideal for correcting and adjusting work. The single stroke function allows for punching, notching, and clinching tooling. The KF170PDK comes equipped with FWA405K shrinking and FWR407K stretching jaws.

The KF170PDK-BM is a Bench Mount version of the KF170PDK.



Model #	Reach x Gap	Aluminum Capacity	Steel Capacity	Stainless Capacity	Shipping Weight
KF170PDK	7" x 4"	0.098	0.078	0.059	400 lbs
KF170PDK-BM	7" x 4"	0.098	0.078	0.059	205 lbs

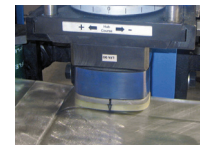


KF170

Eckold MKF140/32 Mobile Krafftormer

The MKF140/32 Mobile Krafftormer is designed for limited straightening and correcting on large work pieces. It can work in a single or continuous stroke. The mobile C-Frame is operated by its 2-hand safety release, a suspension system and Teflon rollers to limit depth. A hydraulic power unit provides for high forming force with a sensitive pressure adjustment. Available with No-Mar shrinking and stretching tooling. Please call for tooling and applications.

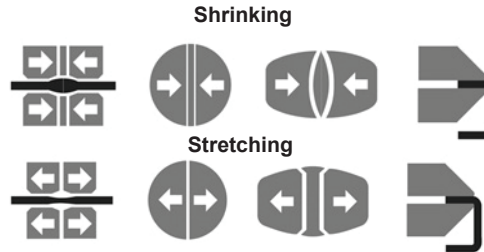
Model #	Throat Depth Horizontal	Throat Vertical	Strokes Per Minute	Drive	Aluminum Capacity	Steel Capacity	Stainless Capacity	Shipping Weight
MKF140/32	5 1/2"	5"	Max 60	Hydraulic	0.240	0.157	0.118	290 lbs



Toll Free 866.760.6931 Local 734.947.8100 Fax 734.947.8101 Email Sales@KlassicToolCrib.com

Eckold Krafftormer Tooling

Eckold forming tools are available for shrinking, stretching, doming, planishing, flattening, straightening, flanging, notching, punching and edging of sheet metal. Tooling is designed for sturdiness and long tool life. Forming tools are not built for a specifically shaped component or a specific material, they are truly universal. The same tool can form profile sections, three dimensional shapes and remove wrinkles. Precise correcting jobs are possible by the very sensitive pressure adjustment of all machines. This principle is unique. All forming tools have a quick change design to eliminate down time. All wear and tear parts of the tooling can be replaced individually.



Planishing



Straightening



Doming



Flattening



Finish Forming



Punching



Notching



Shrinking Jaws		
Model #	Size	Krafftormer Machine
FWA402S	40 mm	KF324, KF340, KF460 & KF675
FWA502S	50 mm	KF324, KF340, KF460 & KF675
FWA60S	60 mm	KF324, KF340, KF460 & KF675
FWA802T	80 mm	KF460, & KF675
FWA1002T	100 mm	KF460 & KF675
FWA802/3T	80 mm	KF460 & KF675
FWA602/4X	80/60 mm	KF460 & KF675
FWA802/4X	80 mm	KF460 & KF675
FWA1002/4X	100 mm	KF460 & KF675
FWA1306X		KF675
LFA70S No Mar	40 x 70	KF324, KF340, KF460 & KF675
LFA90S No Mar	55 x 90S	KF324, KF340, KF460 & KF675
LFA120S No Mar	10 x 120	KF324, KF340, KF460 & KF675
LFA150S No Mar	80 x 150	KF460 & KF675
LFA70 No Mar	40 x 70	MKF140/32
LFA90 No Mar	55 x90	MKF140/32
LFA155 No Mar	80 x 155	MKF140/32
KS50S	Beaked	KF324, KF340, KF460 & KF675
KSL60S No Mar	Beaked	KF460 & KF675
KSL80T	Beaked	KF460 & KF675
FWA405K	40 mm	KF170
FWA60K	60 mm	KF170
HLFA70K No Mar	40 x 70	KF170
HSA40K	Beaked	KF170
HLA60K No Mar	Beaked	KF170
Doming		
PFW60S	60 mm	KF324, KF340, KF460 & KF675
PFW80S	80 mm	KF324, KF340, KF460 & KF675
PFW100T	100 mm	KF460 & KF675
PFW150X	150 mm	KF675
PFW40K	40 mm	KF170
PFW50K	50 mm	KF170

Stretching Jaws		
Model #	Size	Krafftormer Machine
FWR403S	40 mm	KF324, KF340, KF460 & KF675
FWR60S	60 mm	KF324, KF340, KF460 & KF675
FWR803T	80 mm	KF460 & KF675
FWR1003T	100 mm	KF460 & KF675
FWR803/3T	80 mm	KF460 & KF675
FWR803/4X	100 mm	KF460 & KF675
FWR1003/4X	100 mm	KF460 & KF675
FWR1307X	130 mm	KF675 only
LFR90S No Mar	55 x 90	KF324, KF340, KF460 & KF675
LFR90 No Mar	55 x 90	MKF140/32
LFR155 No Mar	80 x 155	MKF140/32
KSLR80T No Mar	340x220x280	KF460 & KF675
SW2S	60 mm	KF324, KF340, KF460 & KF675
SW4T	95 mm	KF675
FWR407K	40 mm	KF170
FWR603K	60 mm	KF170
HLFR70K No Mar	40 x 70	KF170
HSR60K	Beaked	KF170
HLR60K No Mar	Beaked	KF170

Planishing Jaws		
Model #	Size	Krafftormer Machine
TP25S	65/25 mm	KF324, KF340, KF460 & KF675
TP15K	15/15 mm	KF170

Straightening Jaws		
Model #	Size	Krafftormer Machine
RWS 80 x 150	Lower	KF324, KF340, KF460 & KF675
RW-TP25S	Upper	KF324, KF340, KF460 & KF675
RW-WT80S	Upper	KF324, KF340, KF460 & KF675

Flattening Jaws		
Model #	Size	Krafftormer Machine
FWS60S	60 mm	KF324, KF340, KF460 & KF675
FWS80T	80 mm	KF460 & KF675
LFS60S No Mar	60 mm	KF324, KF340, KF460 & KF675

Specialty Tooling - Call For Information			
Model #	Function	Machine	Application
LSW1K	Hole Punch	ASW42K	Notching
DFW1K	Clinching		

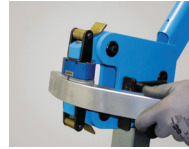
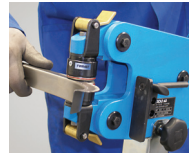
Toll Free 866.760.6931 Local 734.947.8100 Fax 734.947.8101 Email Sales@KlassicToolCrib.com

Eckold HF100 Handformer

The Eckold HF100 series Handformer is a stationary machine with a manual drive that replaces laborious hammer work when forming metal. It is suitable for shrinking and stretching metal sheets and profiles up to a thickness of 1.5 mm (16 gauge). The single stroke of the Handformer makes it possible to operate tools for notching, punching and edging. The HF100K includes one set of FWA405SSP Shrinking and FWR407SSP Stretching Jaws. The HF100PA100 is equipped with a pneumatic drive and foot pedal which allows for hands free operation.



HF100PA100



HF100K

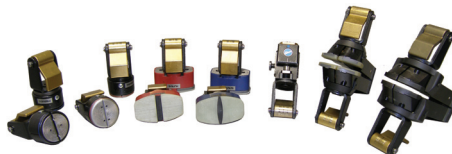
Model #	Reach x Gap	Aluminum Capacity	Steel Capacity	Stainless Capacity	Shipping Weight
HF100	4" x 2 1/4"	0.078	0.059	0.039	69 lbs
HF100K	4" x 2 1/4"	0.078	0.059	0.039	76 lbs
HF100PA100	4" x 2 1/4"	0.078	0.059	0.039	105 lbs
PA100					39 lbs

Power drive unit Includes foot control

Eckold Handformer Tooling

Eckold forming tools can deal with different shapes and materials qualities. The desired result is reached step-by-step with each stroke equaling one step. Forward feed and pressure are applied to control the forming. Eckold machinery is precise and produces minimum of noise. All wear and tear parts of the tooling can be replaced individually.

Shrinking Jaws			Stretching Jaws			Specialty Jaws		
Model #	Size Capacity	Machine	Model #	Size Capacity	Machine	Model #	Type	Machine
FWA405SSP	40 mm	Handformers	FWR407SSP	40 mm	Handformers	LSW1SSP	Punch	Handformers
HSA40SSP	Beaked	Handformers	HSR60SSP	Beaked	Handformers	AK250	Edging	Handformers
HLFA70SSPNoMar	40 x 70	Handformers	HLFR70SSPNoMar	40 x 70	Handformers	DFW1SSP	Clinching	Handformers
HLA60SSPNoMar	Beaked	Handformers	HLR60SSPNoMar	Beaked	Handformers	ASW42SSP	Notching	Handformers



Eckold HZ52 Hand Plier

The Eckold hand pliers HZ52 are specially designed for making adjustments and corrections at the worksite by stretching and even shrinking. They can handle sheet metal and profiles up to .039" thickness or aluminum up to .059" thickness. HZ52 hand pliers are used for correcting or adjusting metal profiles and sheet flanges by shrinking or stretching. The HZ52 weighs 8.37lbs.

Model #	Aluminum Capacity	Steel Capacity	Stainless Capacity
HZ52	0.078	0.059	0.039

Throat Vertical	Total Length	Clinching Variants
2.75"	27"	S-DF 4

Specialty Jaws		
Model #	Type	Function
FWA405 (STD)	40 mm	Shrinking
FWR407 (STD)	40 mm	Stretching
HLFA70	NoMar	Shrinking
HLFR70	NoMar	Stretching
Clinching		Call for details



Toll Free 866.760.6931 Local 734.947.8100 Fax 734.947.8101 Email Sales@KlassicToolCrib.com

Eckold GL2 Portable Planishing Hammer



The Eckold GL2 planishing hammer is essential for the manual forming of sheet metal. This tool is designed to be used in body restoration, repair or anywhere metal has to be formed into a particular shape. This is the perfect tool to give the best possible surface finish on sheet metal parts already pre-formed. Fine laser weld seams can be planished fast and efficient using the GL2.

The Eckold GL2 planishing hammer is delivered complete with air hose, tool rack and inserts for planishing, stretching, and curving. The tool's quick change capabilities enables different inserts to be changed quickly and easily. Desired shapes are gradually reached step-by-step, which is made possible by the sensitive pressure adjustment. In addition to standard inserts, Eckold offers optional synthetic inserts especially designed to reduce the risk of marking the surface of light metal panels. The perfect tool for a perfect finish.



GL2



GL2 MAX



GL2 PDKIT



GL2 Series Eckold Planishing Hammer

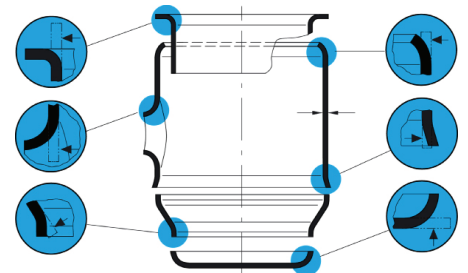
GL2	GL2MAX	GL2PDKIT	Description	Material	Dimension
X	X		GL2 Planishing Hammer		
X	X		Planishing Insert	Steel	1.89" / R 19.685"
X	X		Curving Insert	Steel	0.71" x 1.575" / R 19.685"
X	X		Stretching Insert	Steel	1.575" / R 2.362"
	X	X	Stretching Insert	Steel	1.575" / R 1.969"
	X	X	Stretching Insert	Steel	1.89" / R 2.756"
	X	X	Planishing Insert	Synthetic	1.89" / R 19.685"
	X	X	Blank (Rectangular)	Synthetic	0.71" x 1.575" / Flat
	X	X	Stretching Insert	Synthetic	1.575" / R 2.362"
	X	X	Stretching Insert	Synthetic	1.575" / R 1.969"
	X	X	Stretching Insert	Synthetic	1.89" / R 2.756"
	X	X	Blank (Round) (3 pcs)	Synthetic	1.89" / Flat
	X	X	Regular Shaft	for Synthetic	1.575"
	X	X	Swivel Shaft	for Synthetic	1.575"
	X		Molded impact resistant tool box		

Eckold MZ20 and MZ30 Mobileformer Flanging Tools



Forming operations in today's Tank and Vessel manufacturing is still partly done by using heat and hammers on the areas to be formed. The Eckold Mobileformers eliminate this problem. They offer the user flexibility and portability for flanging, neckforming, straightening, and correcting. The mobile hydraulic drive considerably reduces the noise level, set-up time, and provides clean forming without heat.

The Eckold Mobileformers are designed for material ranging from 0.0787" to 0.5906" steel thickness. Please contact us for more detailed information on your specific requirements.



Toll Free 866.760.6931 Local 734.947.8100 Fax 734.947.8101 Email Sales@KlassicToolCrib.com

KTC Plastic Barrel Mallets

Our professional series Plastic Barrel Mallets feature polyethylene heads with one of the highest plastic density rating insures that you get the heaviest weight head. Each unit is precision machined with a finished working surface that will provide years of service. The handle is made from ash and the ball end improves the feel of the metal flow.

Model #	Head Diameter	Overall Head Length	Large Radius Diameter	Weight
KTC400	2"	4 1/2"	1"	0.75 lbs
KTC401	2 1/2"	5 1/2"	1 1/2"	0.95 lbs
KTC402	3"	5 1/2"	2"	1.30 lbs



KTC Plastic Jumbo Reach Bossing Mallets

Our professional series Plastic Bossing Mallets have the combination of unique radius and overall head lengths. Featuring polyethylene heads with one of the highest plastic density ratings insures the heaviest weight head. Each unit is precision machined with a finished working surface that will providing years of service. The handle is made from ash and the ball end improves the feel of the metal flow.

Model #	Head Diameter	Overall Head Length	Small Radius Diameter	Large Radius Diameter	Weight
KTC397	2"	7 1/2"	5/8"	2 1/4"	1.00 lbs
KTC398	2 1/2"	8 1/2"	7/8"	1 1/2"	1.48 lbs
KTC399	3"	7 1/2"	1 1/4"	3"	1.85 lbs



KTC Wood Bossing and Barrel Mallets

Our professional series Wood Bossing and Barrel Mallets are made from grade A select Midwestern grown hard maple for toughness, stiffness, and durability. Hardwood is an excellent material for reshaping. Each head is precision machined and sanded with a hand rubbed oil finish. Includes a comfortable hickory handle. Overall length is 11 1/4".

Model #	Style	Head Diameter	Overall Head Length	Radius Diameter	Weight
KTC967	Bossing	2"	6"	1"	11.2 oz
KTC968	Bossing	2 1/2"	6"	1 1/4"	18.2 oz
KTC969	Bossing	3"	6"	1 1/2"	25.2 oz



KTC Leather Shot Bag

Our leather shot bags are made of thick top grain cowhide for extreme durability and long life. They have a suede outer finish and a tanned inner surface for blemish free metal work. Each bag is double stitched with a leather binding around the edge. When filled shot bags are 1 1/2" to 2" thick. A heavily reinforced flap with a Velcro® closure system is used to retain the filler. #9 lead shot (more aggressive) or play sand (firmer) is recommended. Shot Bags are sold less filling.



KTC403 12" Shot Bag



KTC403-4 4" Shot Bag

Model #	Diameter	Weight
KTC403-4	4"	2.00 lbs
KTC403-8	8"	4.50 oz
KTC403 (std)	12"	8.00 oz



KTC403-1812
18" x 12" Shot bag

Model #	Diameter	Weight
KTC403-18	18"	14.00 oz
KTC403-1212	12" x 12"	2.40 lbs
KTC403-1812	18" X 12"	1.50 lbs

KTC Hard Wood Slappers

These high quality wood slappers are some of the most versatile tools used in metal forming. Made from grade A select Midwestern hard maple for stiffness, strength and durability. Finished with a protective oil that resist staining and moisture penetration. They are available in flat, gentle, curved and 2 1/4" radius. All except the 2 1/4" radius come with a leather face to eliminate marring.



Model #	Shape Style	Overall Length	Surface Length	Face Width	Weight
KTC404	Flat	14"	8 1/4"	2 1/4"	1.30 lbs
KTC405	Gentle	14"	8 1/4"	2 1/4"	1.30 lbs
KTC406	Curved	14"	8 1/4"	2 1/4"	1.30 lbs
KTC407	Radius 2 1/4"	14"	8 1/4"	2 1/4"	1.30 lbs
KTC408	Replacement Leather Face				

Toll Free 866.760.6931 Local 734.947.8100 Fax 734.947.8101 Email Sales@KlassicToolCrib.com

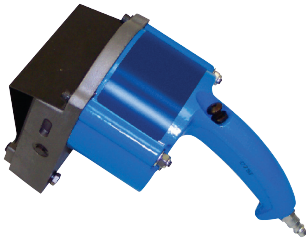
KAT108 Air Sheet Metal Shear



The KAT108 Air Shear is designed with an ergonomic comfort grip handle with a variable speed trigger making this tool a joy to use. It has a rotating air inlet and rear exhaust for additional comfort. Ideal for all shop work.

Model #	Description	Steel Capacity	Aluminum Capacity	RPM	Overall Length	Air Inlet	Weight
KAT108	Air Shear	18 gauge	16 gauge	2600	8 1/2"	1/4"	1.30 lbs.

KAT750 Tab Shear



The KAT750 Tab Shear will easily shear router tabs from aluminum, steel, titanium and stainless steels. Will also perform similar shearing and trimming tasks with this light weight tool. Made of 356-T6 aluminum and heat treated precision ground steel for the demanding use in the aerospace industry. The hard anodized aluminum frame is twice as strong as the competition's in this area. The tool's steel shear blades can be resharpened or rotated to a new cutting edge. Large carbide wear faces protect the frame from wear and damage.

Model #	Description	Steel Capacity	Aluminum Capacity	Max Throat Opening	Shearing Force	Weight	Dimensions
KAT750	Tab Shear	1/16"	1/8"	18" x 3"	4,200 lbs	7 lbs	9 1/2"L x 6 3/4"H

KAT141 Air Nibbler



The KAT141 Air Nibbler is designed to nibble steel or aluminum sheets without distorting or twisting. Small enough to start cut in the center of a panel with a 1" hole. Cuts a tight 1/4" radius with great accuracy. Includes an adjustable die guide for forward, backward and right or left cutting. Weight 3.25 lbs.

Model #	Description	Steel Capacity	Aluminum Capacity	Strokes Per Minute	Replacement Die	Replacement Punch	Dimensions
KAT141	Air Nibbler	18 gauge	16 gauge	2600	KTC640-1	KTC640-2	7" Length

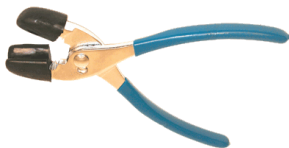
KTC313 Hand Nibbler Cutting Tool



The KTC313 Hand Nibbler is a simple effective way to nibble out access holes, panel fittings, dash boards, instrument panels, gauge holes etc. Cuts sheet metal up to 18 gauge steel and aluminum, plastics and copper up to 1/16". Made of pressed steel with a replaceable hardened punch (KTC313-1). Weight .7 lbs.

KTC840 Fluting Plier - Large Flute

The KTC840 Fluting Pliers have a large flute and are useful for bigger jobs. The jaws are covered with a special heavy duty phenolic coating to cushion the bite. Made from quality drop forged steel. 8" length with plastic grip handles.



KTC586 Hand Seamer

Designed with 1" deep and 3-1/2" wide jaws, this hand seamer is ideal for making short bends in areas like ribs, bulkheads and duct work. The tool has a heavy cushioned rubberized handle for comfort. Cast construction, weight 1.5 lbs.



Toll Free 866.760.6931 Local 734.947.8100 Fax 734.947.8101 Email Sales@KlassicToolCrib.com

KAT Pneumatic Compression Riveters - Alligator Type



The Classic Air Tool Pneumatic Compression Riveters are designed to consistently apply the same compression force providing an identical finish and appearance with ultimate structural efficiency. The squeezing action is obtained by coupling an air cylinder and piston to a wedge or cam, thus multiplying the original force to extreme ratios. High compression forces are obtained with the forward piston movement being exerted at the work point. Optimum control and maximum force is obtained when using two correct size KTC rivet sets. Quiet and very simple to operate. Please note parts and accessories are interchangeable with Chicago Pneumatic riveters. Rebuilt units are available please inquire.

KAT214A Series Single Cylinder Compression Riveter

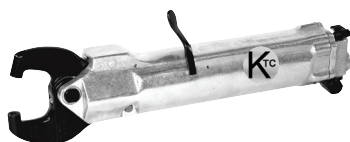
Model #	Rivet Capacity		Reach	Gap	Closed Height	Shank Diameter	Max Force	Max Travel	Length	Weight
	Alum.	Steel								
KAT214AHP-1 1/2	5/32"	1/8"	1 1/2"	1 5/8"	7/8"	0.187"	3800 lbs	5/8"	9 3/16"	3.75 lbs
KAT214AHP-2 1/4	5/32"	1/8"	2 1/4"	2 1/8"	7/8"	0.187"	3200 lbs	7/8"	10 1/8"	4.25 lbs
KAT214AHP-3	1/8"	5/32"	3"	2 1/8"	7/8"	0.187"	2400 lbs	1 1/4"	10 7/8"	4.75 lbs



The KAT tandem action squeezers have 2 piston cups that double the force of the single cylinder compression riveters to provide additional squeezing force allowing them to set larger diameter rivets.

KAT214TA Series Tandem Cylinder Compression Riveter

Model #	Rivet Capacity		Reach	Gap	Closed Height	Shank Diameter	Max Force	Max Travel	Length	Weight
	Alum.	Steel								
KAT214TAHP-1 1/2	1/4"	3/16"	1 1/2"	1 5/8"	7/8"	0.187"	7200 lbs	5/8"	12"	5.50 lbs
KAT214TAHP-2 1/4	3/16"	5/32"	2 1/4"	2 1/8"	7/8"	0.187"	5800 lbs	7/8"	13"	6.00 lbs
KAT214TAHP-3	5/32"	1/8"	3"	2 1/8"	7/8"	0.187"	4600 lbs	1 1/4"	13 3/4"	6.25 lbs



The KAT triple action squeezers have 3 piston cups that enable these tools to build up additional squeezing force allowing them to set larger diameter rivets.

KAT214TAAA Series Triple Cylinder Compression Riveter

Model #	Rivet Capacity		Reach	Gap	Closed Height	Shank Diameter	Max Force	Max Travel	Length	Weight
	Alum.	Steel								
KAT214TAAA-1 1/2	1/4"	3/16"	1 1/2"	1 5/8"	7/8"	0.187"	9000 lbs	5/8"	16"	7.00 lbs
KAT214TAAA-2 1/4	3/16"	5/32"	2 1/4"	2 1/8"	7/8"	0.187"	7000 lbs	7/8"	16 3/4"	7.50 lbs
KAT214TAAA-3	3/16"	5/32"	3"	2 1/8"	7/8"	0.187"	5200 lbs	1 1/4"	17 1/2"	8.00 lbs

KAT351A Series Large Compression Riveter

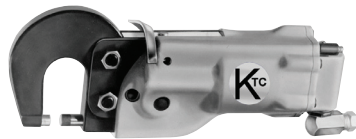
Model #	Rivet Capacity		Reach	Closed Height	Max Travel	Shank Diameter	Max Force	Final Part of Stroke @ MaxForce	Length	Weight
	Alum.	Steel								
KAT351A-2 7/8	5/32"	1/8"	2 7/8"	7/8"	5/8"	0.187"	5200 lbs	0.125"	19 1/2"	15.75 lbs
KAT351A-5	1/8"	3/32"	5"	7/8"	1 3/8"	0.187"	3400 lbs	0.188"	21 5/8"	19.75 lbs
KAT351A-7	1/8"	3/32"	7"	1 1/2"	1 11/16"	0.187"	3000 lbs	0.188"	23 5/8"	24.25 lbs
KAT351A-9 1/8	1/8"	3/32"	9 1/8"	3/4"	1 11/16"	0.187"	3000 lbs	0.063"	23 3/4"	26.25 lbs

KAT351TA Series Large Tandem Compression Riveter

Model #	Rivet Capacity		Reach	Closed Height	Max Travel	Shank Diameter	Max Force	Final Part of Stroke @ MaxForce	Length	Weight
	Alum.	Steel								
KAT351TA-2 7/8	1/4"	3/16"	2 7/8"	7/8"	5/8"	0.187"	10400 lbs	0.125"	23 3/4"	18.50 lbs
KAT351TA-5	3/16"	5/32"	5"	7/8"	1 3/8"	0.187"	6800 lbs	0.188"	25 7/8"	22.50 lbs
KAT351TA-7	3/16"	5/32"	7"	1 1/2"	1 11/16"	0.187"	6000 lbs	0.188"	27 7/8"	27.00 lbs
KAT351TA-9 1/8	5/32"	1/8"	9 1/8"	3/4"	1 11/16"	0.187"	5500 lbs	0.063"	30"	29.00 lbs

Toll Free 866.760.6931 Local 734.947.8100 Fax 734.947.8101 Email Sales@KlassicToolCrib.com

KAT Pneumatic Compression Riveters - C Type



The Classic Air Tool Pneumatic Compression Riveters are designed to consistently apply the same compression force to provide an identical finish and appearance with ultimate structural efficiency. The squeezing action is obtained by coupling an air cylinder and piston to a wedge or cam, thus multiplying the original force to extreme ratios. High compression forces are obtained with the forward piston movement being exerted at the work point. Optimum control and maximum force is obtained when using two correct size KTC rivet sets. Quiet and very simple to operate. Please note parts and accessories are interchangeable with Chicago Pneumatic riveters. LY units are less C-Yoke. Rebuilt units are available please inquire.

KAT214C Series Single Cylinder Compression Riveter

Model #	Rivet Capacity		Reach	Gap	Closed Height	Shank Diameter	Max Force	Max Travel	Length	Weight
	Alum.	Steel								
KAT214C	1/8"	3/32"	1 1/2"	1 1/4"	11/16"	0.187"	3000 lbs	9/16"	10 5/16"	4.50 lbs
KAT214C-LY	1/8"	3/32"				0.187"	3000 lbs	9/16"		
KAT214CHP	5/32"	1/8"	1 1/2"	1 1/4"	11/16"	0.187"	3800 lbs	9/16"	10 5/16"	4.50 lbs
KAT214CHP-LY	5/32"	1/8"				0.187"	3800 lbs	9/16"		



KAT214TC Series Tandem Cylinder Compression Riveter

Model #	Rivet Capacity		Reach	Gap	Closed Height	Shank Diameter	Max Force	Max Travel	Length	Weight
	Alum.	Steel								
KAT214TC	3/16"	5/32"	1 1/2"	1 1/4"	11/16"	0.187"	6000 lbs	9/16"	14"	5.50 lbs
KAT214TC-LY	3/16"	5/32"				0.187"	6000 lbs	9/16"		
KAT214TCHP	1/4"	3/16"	1 1/2"	1 1/4"	11/16"	0.187"	7200 lbs	9/16"	14"	5.50 lbs
KAT214TCHP-LY	1/4"	3/16"				0.187"	7200 lbs	9/16"		



KAT214TCCC Series Triple Cylinder Compression Riveter

Model #	Rivet Capacity		Reach	Gap	Closed Height	Shank Diameter	Max Force	Max Travel	Length	Weight
	Alum.	Steel								
KAT214TCCC	1/4"	3/16"	1 1/2"	1 1/4"	11/16"	0.187"	9000 lbs	9/16"	18 3/4"	8.50 lbs
KAT214TCCC-LY	1/4"	3/16"				0.187"	9000 lbs	9/16"		

KAT Large Pneumatic Compression Riveters - C Type

The Classic Air Tool Pneumatic Compression Riveters are designed to consistently apply the same compression force to provide an identical finish and appearance with ultimate structural efficiency. The squeezing action is obtained by coupling an air cylinder and piston to a wedge or cam, thus multiplying the original force to extreme ratios. High compression forces are obtained with the forward piston movement being exerted at the work point. Optimum control and maximum force is obtained when using two correct size KTC rivet sets. Quiet and very simple to operate. Please note: parts and accessories are interchangeable with Chicago Pneumatic riveters.



KAT351C Series Large Compression Riveter

Model #	Rivet Capacity		Reach	Gap	Closed Height	Shank Diameter	Max Force	Max Travel	Length	Weight
	Alum.	Steel								
KAT351C	3/16"	5/32"	2 1/8"	1 3/16"	25/32"	0.187"	6000 lbs	9/16"	17 1/2"	12.50 lbs
KAT351C-LY	3/16"	5/32"				0.187"	6000 lbs	9/16"		

KAT351TC Series Large Tandem Compression Riveter

Model #	Rivet Capacity		Reach	Gap	Closed Height	Shank Diameter	Max Force	Max Travel	Length	Weight
	Alum.	Steel								
KAT351TC	1/4"	7/32"	2 1/8"	1 3/16"	25/32"	0.187"	12000 lbs	9/16"	21 1/4"	15.25 lbs
KAT351TC-LY	1/4"	7/32"				0.187"	12000 lbs	9/16"		

Toll Free 866.760.6931 Local 734.947.8100 Fax 734.947.8101 Email Sales@KlassicToolCrib.com

KAT351PU Pneumatic Roof Punch

The KAT351PU Pneumatic Roof Punch is designed to punch a clean, burr free hole that is much faster and cleaner than drilling. The pneumatic punch delivers 5,400 lbs. of force, which provides enough power to punch through 3/16" thick material. It has a 1-7/8" reach and a 1/2" gap. 21" overall length. Specify punch and dies when ordering. Created for the semi-truck trailer industry for punching roof rail holes rather than drilling.



KAT351RY Roof Top Rail Rivet Squeezer

The KAT351RY Roof Top Rail Rivet Squeezer is perfect for installing 3/16" and 1/4" rivets on most tractor trailer roof rails. Yoke reach is 1 7/8" with 1 3/16" gap. Accepts .187 shank squeezer sets.

- KTC846 Roof Top Rail Yoke Kit fits KAT351C and CP-0351 series compression riveters with type 1 frames. Kit comes complete with C-yoke, bolts, and nylock nuts.



KTC150 Tandem Conversion Unit for KAT351 and CP0351 Compression Riveter



Tandem Conversion Unit will fit all "alligator" or "C" type KAT351 and CP-0351 compression riveters. Increases force from 6,000 lbs to 12,000 lbs. Complete kit includes everything needed for conversion, piston, piston rod, bolts, and tandem cylinder. Klassic Tool Crib's fully trained tool repair department can easily perform the conversion for you. We will disassemble, clean, inspect and complete the conversion quickly.

KAT351-APS Pedestal w/ Air Foot Pedal



The KAT351-APS air operated, foot controlled pedestal stand will accept CP0351, US151 and APT740 series riveters. It is supplied with a foot pedal and 8 ft. hose. This stand has a working height of 41" and will accommodate either a "C" style or "alligator" style riveter. (Rivet squeezer not included). Shipped via motor freight item as it weighs 90 lbs.

KTC151 Air Foot Pedal Control



The KTC151 Air Foot Pedal Control converts standard lever-operated CP-0351 compression riveters to foot-operated for riveting applications requiring two hands. Unit includes the Foot Pedal Control and Throttle Valve mechanism.

Optional P078214 Manual Cable Style Foot Control is also available.

KTC214APS Bench Top Pede



The KAT214-APS bench stand is predrilled to mount on your bench or custom fabricated stand. It will accommodate CP0214, US114 series of tools, as well as Atlantic and APT. The stand allows 360° rotation of the tool. Included is a 6 ft. hose and an air foot pedal which allows the operator to use both hands to hold the parts or for alignment. (Rivet squeezer not included).

KTC564 Air Foot Pedal



The KTC564 Air Foot Pedal is designed to fit all KAT214 and CP0214 style rivet squeezers. Air operated and variable speed. The unit comes complete with the automatic backhead assembly which can easily be attachment to the rivet squeezer.

Toll Free 866.760.6931 Local 734.947.8100 Fax 734.947.8101 Email Sales@KlassicToolCrib.com

KTC Hand Rivet Squeezers

The KTC Heavy Duty hand rivet squeezers are made of stainless steel to the highest quality standards. Features include an adjustable set holder, locking lever arm, comfort caps and easily interchangeable yokes. The hand rivet squeezers accept rivet sets and dimple die sets with .187 diameter shanks. The adjustable set holder allows the user to accommodate various lengths of rivet sets and rivets.

Model #	Description	Gap	Reach
KTC152-1.5	Hand Rivet Squeezer 1 1/2"	1 1/4"	1 1/2"
KTC152-3	Hand Rivet Squeezer 3"	1 1/4"	3"
KTC152-4	Hand Rivet Squeezer 4"	1 1/4"	4"
KTC152-Combo	Hand Rivet Squeezer w/ 1 1/2" & 3" Yokes	1 1/4"	1 1/2" & 3"
KTC153	1 1/2" Yoke only	1 1/4"	1 1/2"
KTC154	3" Yoke only	1 1/4"	3"
KTC625	4" Yoke only	1 1/4"	4"
KTC152-2.2	Hand Squeezer 2"	2"	2

KTC152 Deluxe Hand Rivet Squeezer Kit		
Model #	Description	Reach
KTC152-3	Hand Rivet Squeezer 3"	3"
KTC153	1 1/2" Yoke only	1 1/2"
SM200-4703	AN470 Squeezer Set 3/32", 1/4" Body Length	
SM200-4704	AN470 Squeezer Set 1/8", 1/4" Body Length	
SM200-4705	AN470 Squeezer Set 5/32", 1/4" Body Length	
SM200-4706	AN470 Squeezer Set 3/16", 1/4" Body Length	
SM210	Flush Set 1/8" Length, 1/2" Body Diameter (2 pieces)	
SM211	Flush Set 1/4" Length, 1/2" Body Diameter	
SM212	Flush Set 3/8" Length, 1/2" Body Diameter	
KTC155	AN426 Dimple Die Set 3/32"	
KTC156	AN426 Dimple Die Set 1/8"	
KTC157	AN426 Dimple Die Set 5/32"	
KTC158	AN426 Dimple Die Set 3/16"	
	Foam insulated molded box	



KTC152 Deluxe Hand Rivet Squeezer Kit

KTC152 Master Kit

This 32 piece kit comes with semi-tubular, oval, AN470 & dimple die sets (male and female) for sizes 3/32, 1/8, 5/32 & 3/16. Also has assorted flush sets. All Sets are .187 shank. Custom foam molded box with 1 1/2" hand rivet squeezer and 3" yoke and quick release pins. The Hand Squeezer has an adjustable set holder to easily adapt to multiple riveting applications. Tool is made of stainless steel and quality craftsmanship.



KTC152 Ultimate

This 45 piece kit comes with semi-tubular, oval, AN470, AN455, AN430, AN442 & dimple die sets (male and female) for sizes 3/32, 1/8, 5/32 & 3/16. Also has assorted flush sets. All Sets are .187 shank. Custom Foam molded box with 1 1/2" hand rivet Squeezer and 2" & 3" yokes and quick release pins. The Hand Squeezer has adjustable set holder to easily adapt to multiple riveting applications. Tool is made of Stainless steel and quality craftsmanship.



Toll Free 866.760.6931 Local 734.947.8100 Fax 734.947.8101 Email Sales@KlassicToolCrib.com

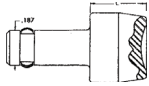
KTC Squeezer Cupped Rivet Sets - .187 Shank

Manufactured from Industrial-Grade high alloy steels
Cupplings of all sets and flush set faces are polished to a high luster
All sets are heat treated to exacting standards to insure long life
Body diameters are ground

Manufacturing methods assure uniformly good tools with accurate cupplings free from all tool marks.

In addition to the complete range of tools listed, we also welcome specials. Squeezer sets also come in .250, .312, & .375 shank diameter.

AN470 Universal Squeezer Sets - .187 Shank



Model #	Rivet Body Diameter	Set Length
SM200-4703	3/32"	1/4"
SM200-4704	1/8"	1/4"
SM200-4705	5/32"	1/4"
SM200-4706	3/16"	1/4"
SM200-4708	1/4"	1/4"

KAT Squeezer Flush Rivet Sets - .187 Shank



Model #	Set Body Length	Set Diameter
SM210	3/32"	1/4"
SM211	1/8"	1/4"
SM212	5/32"	1/4"
SM213	3/16"	1/4"
SM214	1/4"	1/4"

AN455 Brazier Head Squeezer Sets - .187 Shank



Model #	Rivet Body Diameter	Set Length
SM200-4553	3/32"	1/4"
SM200-4554	1/8"	1/4"
SM200-4555	5/32"	1/4"
SM200-4556	3/16"	1/4"
SM200-4558	1/4"	1/4"

AN430 Round Squeezer Sets - .187 Shank



Model #	Rivet Body Diameter	Set Length
SM200-4303	3/32"	1/4"
SM200-4304	1/8"	1/4"
SM200-4305	5/32"	1/4"
SM200-4306	3/16"	1/4"
SM200-4308	1/4"	1/4"

AN450 Semi-Tublar Squeezer Sets -.187 Shank



Model #	Rivet Body Diameter	Set Length
SM200-4502	1/16"	1/4"
SM200-4503	3/32"	1/4"
SM200-4504	1/8"	1/4"
SM200-4505	5/32"	1/4"
SM200-4506	3/16"	1/4"
SM200-4508	1/4"	1/4"
SM200-45010	5/16"	1/4"

Oval Style Set - .187 Shank



Model #	Rivet Body Diameter	Set Length
SM200-2Oval	1/16"	1/4"
SM200-3Oval	3/32"	1/4"
SM200-4Oval	1/8"	1/4"
SM200-5Oval	5/32"	1/4"
SM200-6Oval	3/16"	1/4"
SM200-8Oval	1/4"	1/4"
SM200-10Oval	5/16"	1/4"

KTC164-CFDK Squeezer Set Kit

Comes with:
4 AN470 squeezer sets (3/32, 1/8, 5/32, & 3/16)
4 Dimple Die Sets (male and female) (3/32, 1/8, 5/32, & 3/16)
7 Flush Sets with thickness of 1/8, 3/16, 1/4, 5/16, 3/8, 7/16 & 1/2
All have .187 standard shank size. Highly polished heat treated steel sets. Comes in a FOD style carrying case



Toll Free 866.760.6931 Local 734.947.8100 Fax 734.947.8101 Email Sales@KlassicToolCrib.com

KAT Pneumatic Riveting Guns

The KAT Pneumatic "X" style Riveting Guns are the most popular guns for all small diameter riveting applications (1/16" - 3/8" rivets). Easily controlled with a properly metered blow will offset the rivet without heating or work hardening. Features include a feathering trigger that enable the operator to control the speed of the gun, precision machined hardened and ground valve, lightweight aluminum handle and a precision machined and hardened cylinder for long life. Each Riveting Gun includes an offset handle, beehive retainer spring and brass air tool regulator.

All "X" style Riveting Guns can be supplied with a .401" bushing. Optional handles styles are listed below. Rebuilt Riveting Guns are offered when available. Most parts are interchangeable with CP 2X, 3X, 4X, 5X, 7X, 9X and CP4444 series riveters.

KAT Pneumatic Riveting Guns

Used by both professionals and beginners, this is an excellent rivet gun for most riveting applications. It has a quality feathering trigger and is supplied with a beehive retainer spring and a brass air tool regulator.



KAT3T

Model #	Rivet Capacity		BPM	Bore & Stroke	Bushing	Overall Length	Weight
	Alum.	Steel					
KAT2T	1/8"	3/32"	2580	1/2" x 2 1/4"	.401"	6 11/16"	2.250 lbs
KAT3T	3/16"	5/32"	2160	1/2" x 2 7/8"	.401"	7 5/16"	2.500 lbs
KAT4T	1/4"	3/16"	1740	1/2" x 3 1/16"	.401"	8 5/16"	2.750 lbs
KAT5T	1/4"	1/4"	1560	3/4" x 2 11/16"	.498"	8 15/16"	4.750 lbs
KAT7T	3/8"	5/16"	900	3/4" x 5 13/16"	.498"	11 15/16"	6.000 lbs
KAT9T	5/16"	1/4"	1400	3/4" x 3 7/8"	.498"	9 15/16"	5.125 lbs

KAT Pneumatic Riveting Guns - Short Shank (Jiffy Type)

The KAT1T and KAT2T Pneumatic Riveting Guns require a short shank "Jiffy Type" rivet set (sold separately) for extremely tight areas. Features include a feathering trigger that enable the operator to control the speed of the gun, precision machined hardened and ground valve, lightweight aluminum handle and a precision machined and hardened cylinder for long life. Each Riveting Gun includes an offset handle (only) and quick change retainer spring.



KAT1T-100B

Model #	Rivet Capacity		BPM	Bore & Stroke	Bushing Short Shank	Overall Length	Weight
	Alum.	Steel					
KAT1T-100B	5/32"	1/8"	2850	9/16" x 1 7/8"	.401"	3 5/8"	2.100 lbs
KAT2T-200B	3/16"	5/32"	2700	9/16" x 2 1/4"	.401"	5 3/8"	3.100 lbs

KTC1003 Rivet Gun Kit

This great starter kit includes your choice of either the 3X or 4X rivet gun. Provides the tools you need with four straight rivet sets, two flush sets, four of the most popular bucking bars and two rivet gun springs. Unique design of the carrying case allows the air regulator to remain attached during storage.

Includes: 3x or 4x rivet gun
 Straight AN470 rivet sets: 3/32, 1/8, 5/32 & 3/16
 Offset AN470 rivet sets: 3/32, 1/8, 5/32, 3/16 & 1/4
 1 Flush Set
 1 Flush Set with Rubber Guard
 Bucking bars: KTC670DB, KTC638DB, KTC647DB, KTC681DB
 Air tool regulator: KTC202
 Beehive spring: KTC167
 Mechaid spring: KTC168
 Red molded box.



Toll Free 866.760.6931 Local 734.947.8100 Fax 734.947.8101 Email Sales@KlassicToolCrib.com

KTC Rivet Sets - .401 Shank Cupped Rivet Sets

Manufactured from Industrial-Grade high alloy steels
 Cuppings of all sets and flush set faces are polished to a high luster
 All shanks are precision ground free from all tool marks
 In addition to the complete range of tools listed, we also welcome specials

All tools heat-treated to exacting standards to insure long tool life
 Manufacturing methods assure uniform tools with accurate cuppings

AN470 Universal Rivet Set - Straight



Model #	Rivet Body Diameter	Rivet Set Length
SM10-4703	3/32"	3 1/2"
SM10-4704	1/8"	3 1/2"
SM10-4705	5/32"	3 1/2"
SM10-4706	3/16"	3 1/2"
SM10-4708	1/4"	3 1/2"

AN470 Universal Rivet Set - 10° Offset



Model #	Rivet Body Diameter	Rivet Set Length
SM20-4703	3/32"	3 1/2"
SM20-4704	1/8"	3 1/2"
SM20-4705	5/32"	3 1/2"
SM20-4706	3/16"	3 1/2"
SM20-4708	1/4"	3 1/2"

AN455 Braizer Rivet Set - Straight



Model #	Rivet Body Diameter	Rivet Set Length
SM10-4553	3/32"	3 1/2"
SM10-4554	1/8"	3 1/2"
SM10-4555	5/32"	3 1/2"
SM10-4556	3/16"	3 1/2"
SM10-4558	1/4"	3 1/2"

AN430 Round Rivet Set - Straight



Model #	Rivet Body Diameter	Rivet Set Length
SM10-4303	3/32"	3 1/2"
SM10-4304	1/8"	3 1/2"
SM10-4305	5/32"	3 1/2"
SM10-4306	3/16"	3 1/2"
SM10-4308	1/4"	3 1/2"

AN450 Tubular Rivet Set - Straight



Model #	Rivet Body Diameter	Rivet Set Length
SM10-4503	3/32"	3 1/2"
SM10-4504	1/8"	3 1/2"
SM10-4505	5/32"	3 1/2"
SM10-4506	3/16"	3 1/2"
SM10-4508	1/4"	3 1/2"

AN442 Flat Head Rivet Set - Straight



Model #	Rivet Body Diameter	Rivet Set Length
SM10-4423	3/32"	3 1/2"
SM10-4424	1/8"	3 1/2"
SM10-4425	5/32"	3 1/2"
SM10-4426	3/16"	3 1/2"
SM10-4428	1/4"	3 1/2"

Flush Sets - Straight

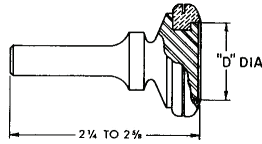


Model #	Shank	Body Diameter	Length
SM90	.401"	1"	2 1/2"
SM91	.401"	1"	3"
SM92	.401"	1"	5 1/2"
SM94	.401"	1 1/4"	3"
SM95	.401"	1 1/4"	5 1/2"

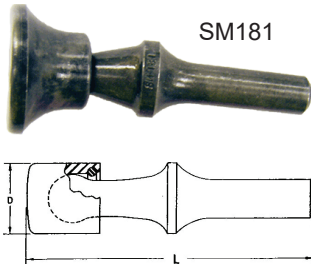
Toll Free 866.760.6931 Local 734.947.8100 Fax 734.947.8101 Email Sales@KlassicToolCrib.com

KTC Rivet Sets - Flush Sets with Rubber Guard

Model #	Shank	Body Diameter
SM170	.401"	3/4"
SM171	.401"	1"
SM172	.401"	1 1/4"
SM173	.498"	3/4"
SM174	.498"	1"
SM175	.498"	1 1/4"

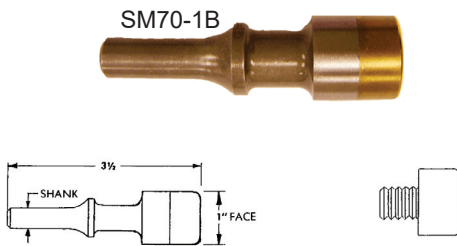


KTC Rivet Sets - Swivel Type Flush Sets



Model #	Shank	Body Diameter	Length
SM180	.401"	3/4"	3"
SM181	.401"	1 3/16"	3"
SM182	.498"	3/4"	3"
SM183	.498"	1 3/16"	3"
SM187	Cap Only	3/4"	--
SM188	Cap Only	1 3/16"	--

KTC Rivet Sets - Flush Sets with Aluminum, Brass, or Plastic Face

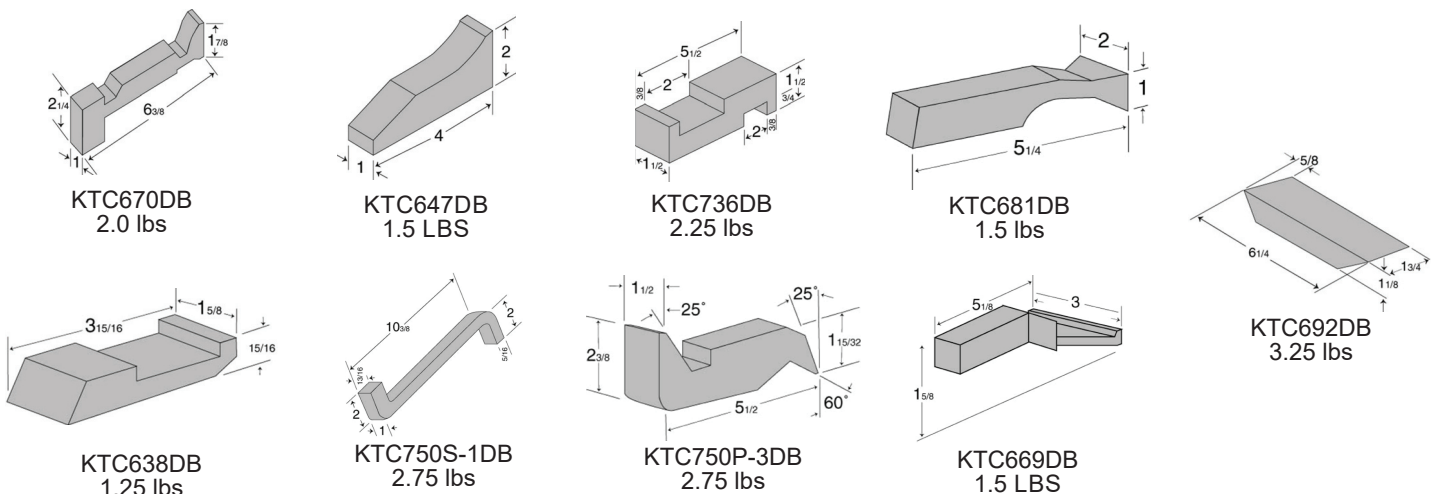


Model #	Shank	Shank	Body Diameter	Length
SM50-1A	.401"	Aluminum	1"	3 1/2"
SM70-1A	.498"	Aluminum	1"	3 1/2"
SM50-1B	.401"	Brass	1"	3 1/2"
SM70-1B	.498"	Brass	1"	3 1/2"
SM50-1P	.401"	Plastic	1"	3 1/2"

Replacement Heads Model # -1A Aluminum, -1B Brass, -1P Plastic

KTC Bucking Bars - Ductile Iron

The KTC Ductile Iron Bucking Bars are made of the highest quality ductile iron available to insure a non-porous finish. Heat treated and machined to drawing specifications. The Ductile Iron bucking bars come with highly polished work surfaces for superb riveting results and can be repolished many times. A wide selection of sizes, shapes and weights are available to insure the proper bucking bar for the job. We can also machine bucking bars to customer drawings. Please call or email for details.



Toll Free 866.760.6931 Local 734.947.8100 Fax 734.947.8101 Email Sales@KlassicToolCrib.com

KTC Retainer Springs

The KTC Retainer Springs are designed to fit the 2X, 3X, 4X and most other .401" and .498" shank rivet guns. Inner diameter is 1 1/8". Built to last from quality steel.

Model #	Spring Type	Fits	Model #	Spring Type	Fits
KTC167	Beehive	.401"	KTC169	Beehive	.498"
KTC168	Quick Change	.401"	KTC170	Quick Change	.498"



KTC Air Tool Regulators

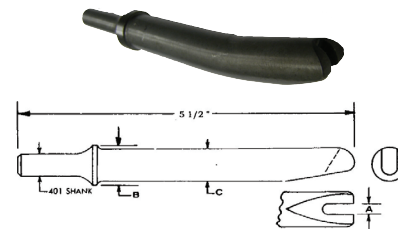
The KTC Air Tool Regulators are designed to allow the user to control the flow of air into the pneumatic tool.

Model #	Type	MPT	NPT
KTC201	Ball Detent - Brass	1/4"	1/4"
KTC202	Ratchet (CP Type) - Brass	1/4"	1/4"
KTC223	Ball Detent - Swivel	1/4"	1/4"



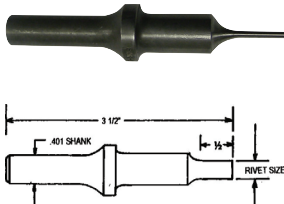
KTC Rivet Sets - Huck & High-Shear Collar Remover Gun-Type Chisel

Model #	Shank	Rivet Size	Length
SMHSC401B-4	.401"	1/8"	5 1/2"
SMHSC401B-5	.401"	5/32"	5 1/2"
SMHSC401B-6	.401"	3/16"	5 1/2"
SMHSC401B-8	.401"	1/4"	5 1/2"
SMHSC401B-10	.401"	5/16"	5 1/2"
SMHSC401B-12	.401"	3/8"	5 1/2"



Can be furnished .498" shank upon request.

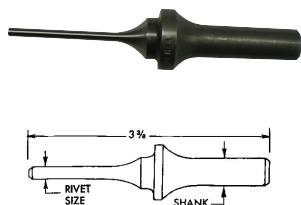
KTC Rivet Sets - .401 Shank Tapered Knock-Out Punches



Model #	Shank	Rivet Size	Length	Model #	Shank	Rivet Size	Length
SMK-3	.401"	3/32"	3 1/2"	SMK-7	.401"	7/32"	3 1/2"
SMK-4	.401"	1/8"	3 1/2"	SMK-8	.401"	1/4"	3 1/2"
SMK-5	.401"	5/32"	3 1/2"	SMK-10	.401"	5/16"	3 1/2"
SMK-6	.401"	3/16"	3 1/2"	SMK-12	.401"	3/8"	3 1/2"

KTC211TP - Tapered Knock-Out Punch Kit .401" shank
Includes: SMK-3, SMK-4, SMK-5 and SMK-6

KTC Rivet Sets - Knock-Out Punch for High-Shear Rivets



Model #	Shank	Rivet Size	Length	Model #	Shank	Rivet Size	Length
SMHS401K-4	.401"	1/8"	3 3/8"	SMHS498K-4	.498"	1/8"	3 3/8"
SMHS401K-5	.401"	5/32"	3 3/8"	SMHS498K-5	.498"	5/32"	3 3/8"
SMHS401K-6	.401"	3/16"	3 3/8"	SMHS498K-6	.498"	3/16"	3 3/8"
SMHS401K-8	.401"	1/4"	3 3/8"	SMHS498K-8	.498"	1/4"	3 3/8"
SMHS401K-10	.401"	5/16"	3 3/8"	SMHS498K-10	.498"	5/16"	3 3/8"
SMHS401K-12	.401"	3/8"	3 3/8"	SMHS498K-12	.498"	3/8"	3 3/8"

KTC212 - High Shear Knock-Out Punch Kit .401" shank
Includes: SMHS401K-4, SMHS401K-5, SMHS401K-6 and SMHS401K-8

Toll Free 866.760.6931 Local 734.947.8100 Fax 734.947.8101 Email Sales@KlassicToolCrib.com

KTC Screw Removal Tool

Used with a .401" shank rivet gun, this tool is designed to easily loosen corroded or painted screws, nuts or bolts. Will also create a new grip in Phillips head screws that have been rounded out. Once the screw is freed up, it is a simple matter of removing it with a screwdriver. Standard .401" Parker taper shank, 3/8" square drive and a 1/4" hex adapter for Phillips or slotted bits and accepts 3/8" square drive standard sockets for nuts and bolts.



Model #	Shank	Overall Length
KTC199K	.401"	7"
KTC200K	.401"	4"

KTC Rivet Sets - .401 SM401E Rivet Set Extension

The SM401E Rivet set Extension is designed to increase the length of .401" shank rivet set an additional 8". The female end accepts the entire .401" shank. Overall length of SM401E is 8".



KTC Rivet Spacing Tool

The KTC Rivet Spacing Tools are used to evenly locate rivet spacing from between 1/2" to 2" in 1/4" increments. Designed for layout and marking of equal spacing and are not intended to act as a drill guide. Made of stainless steel.

Model #	Fingers/Holes	Opening
KTC228	20	38" at 2"
KTC228A	10	18" at 2"



KTC Rivet Set Caps

The KTC Rivet Set Caps are designed to be inserted onto the ends of the rivet sets to provide a protection zone between the rivet set and the rivet. These caps will help prevent against damage to the rivet or adjoining work piece. Color coded for easy use and identification. Each cap is made from quality material and will be effective for approximately 50 to 70 rivets. Sold in packages of 10 pieces. Rivet sets not included.

Model #	Rivet Size	Cap Color
KTC820	3/32"	White
KTC821	1/8"	Red
KTC822	5/32"	Green
KTC823	3/16"	Yellow
KTC824	1/4"	Blue



KTC229 Heavy Duty Rivet Cutter



The KTC229 Heavy Duty Rivet cutter is ideal for heavy use. This cutter will handle rivets from 1/16" to 1/4" diameter aluminum. Adjustable stops allow for cutting to the same length every time. The shortest length this tool will cut is 1/4".

KTC230 Shophead Rivet Gauge



The KTC230 Shophead Rivet Gauges are color coded by rivet size for easy identification. Gauges measure the minimum height and diameter of the shophead after setting. Fast and easy to use.

KTC819 Rivet Holder



The KTC819 Rivet holder is designed to hold rivets in place for the hard to reach or handle areas. It works perfectly with smaller rivet sizes.

Toll Free 866.760.6931 Local 734.947.8100 Fax 734.947.8101 Email Sales@KlassikToolCrib.com

GB704 Blind Rivet Installation Tool

The GB704 Pneumatic-hydraulic tool is designed for the efficient installation of a wide range of blind rivets. It can be operated in any position with one hand. It has a rated pull load of 3300 lbs with 90 psi at the inlet. Nose assemblies must be ordered separately.

- Pulls 1/8", 5/32", 3/16" CherryMAX® rivets Nosepieces
- 456 Max-701-17 Straight Pulling Head
- 456 Max-753-54 Right Angle Pulling Head
- 456 Max-763A-43 Offset Pulling Head

Suitable for: NAS1919U, NAS1921U, MIL-R-7885, NAS9301-9312, BACR15FR/FR, BACR15/GJ/GK and many others.

- Equivalent to G704B Cherry Riveter



456MAX-701-17



456MAX-704-54RA



456MAX-704-43OS

GB704RK-1 Blind Rivet Installation Tool Kit

The GB704RK-1 is a complete tool kit for installing Huck® & Cherry® blind rivets per NAS9301 - NAS9312, M7885, BACR15FP/FR and BACR15GF/GK. It contains a straight, offset and right angle nose to install -4, -5, and -6 rivets, bleeder bottle, pintail catcher bag and grip selector gauge. All packaged in an easy access storage case with manuals and data sheets.



GB743 Commercial Blind Rivet Installation Tool



The GB743 Commercial Blind Riveter comes furnished with the 82-743-24 and a spare nose tip to convert to a 6N-743-24 pulling head. They are designed to pull 3/16" and 1/4" rivets. Additional pulling heads are available upon request. Please call or email for details. The unit operates at 90-100 psi for maximum efficiency. Pulling force 4,000lbs and .900" stroke. Not designed for aerospace rivets. Split handle available. Equivalent to G743A Cherry® Riveter.

Available Pulling Heads: MB08-734A-20 for 1/4 Monobolts
PH6-734A-20 for 3/16 Magna Loks

GB784 Blind Rivet Installation Tool

Designed to pull the 2000 series CherryLok® rivets NAS 1398, NAS 1399, NAS 1738 and NAS 1739. The tool only weighs 8 lbs. and can be operated in any position with one hand. It has a .938" stroke and a rated pull of 2650 lbs. Pulling heads must be ordered separately.

Pulling Heads: 4C-681-25 1/8"
5C-681-25 5/32"
6C-681-25 3/16"
8C-681-25 1/4"

- Equivalent to G784 Cherry Riveter



Toll Free 866.760.6931 Local 734.947.8100 Fax 734.947.8101 Email Sales@KlassicToolCrib.com

POP PRG510A-Plus Blind Riveter



The POP™ PRG510A blind riveter is designed for high speed production, trouble free riveting and easy maintenance. Model PRG510A-Plus includes a 6' hose, additional nosepieces and an adjusting screw. Model MCS510A with Mandrel Collection Systems (MCS) also available.

- | | | | |
|--------------|------------|----------------|----------|
| • PRG402-8A | Jaw Set | • PRN414 1/8" | Open End |
| • PRG520-33 | Jaw Pusher | • PRN514 5/32" | Open End |
| • PRG510-130 | Jaw Lube | • PRN614 3/16" | Open End |
- Nosepieces:
- Weight 4 lbs
 - Pulling Force 1000 lbs
 - Air Consumption: 0.007 cf/rivet
 - Stroke 5/8"
 - Pressure 85 psi

Rivet and Mandrel Material Capacity:

- | | |
|--------------------------|--|
| • Alum - Alum 3/16" | • Alum - Steel 3/16" (Except multi grip) |
| • Steel - Steel 5/32" | • Monel - Steel 1/8" |
| • Stainless - Steel 1/8" | • Stainless - Stainless 1/8" |

POP PRG540 Blind Riveter



The heavy duty pneumatic-hydraulic POP™ PRG540 blind riveter is extremely strong, robust and reliable. As such, it is unbeatable for efficient riveting on mass production lines. This tool will set all POP blind rivets up to and including 1/4", and is considered the work horse of the POP line.

- Required air pressure....85 PSI
- Length.....9"
- Weight....4-1/2 lbs
- Stroke.....11/16"

Powerlink 30 Advanced Hand Blind Riveter



The Powerlink 30 is an improved ergonomic hand tool that features a shorter nose housing, innovative latch design, patented compound link, soft contoured handles and a shorter grip opening for easy one-hand operation. New overall design minimizes friction and improves performance.

Rivet and Mandrel Material Capacity:

- | | |
|----------------------|------------------------------|
| • Alum - Alum 3/16" | • Alum - Steel 3/16" |
| • Steel - Steel 1/8" | • Stainless - Stainless 1/8" |

KTC282 Swivel Head Hand Riveter



The head on KTC282 Hand Riveter rotates 360° allowing you to pull rivets in any position. Unit comes complete with 4 nosepieces for 3/32", 1/8", 5/32" and 3/16" commercial rivets.

KAT109 Adjustable Clutch Screwdriver

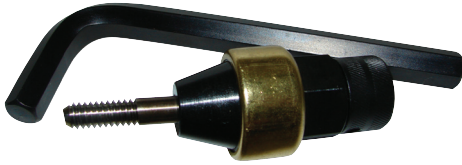


The KAT109 Adjustable Clutch Screwdriver is a well balanced tool with a comfort grip and ergonomic handle. Designed with a variable speed trigger and a reverse lever on top of the tool. Used in production environments.

Model #	Free Speed	Torque Range	Length	Weight
KAT109	1800 RPM	10-90 inch lb	8"	1.30 lbs

Toll Free 866.760.6931 Local 734.947.8100 Fax 734.947.8101 Email Sales@KlassikToolCrib.com

KTC Wrench Style Rivnut Tool (Small & Large Sizes)



The KTC Wrench Style Rivnut tool is Ideal for occasional or limited use. Will also let you apply more pull-up force than is generally available from the lever type Rivnut tools. Hold the body with a wrench and turn the pull-up stud with the supplied wrench. Metrics sizes indicated by *.

Model #	Mandrel Size	Replacement Mandrel
KTC242-440	4/40	KTC242-440M
KTC242-632	6/32	KTC242-632M
KTC242-832	8/32	KTC242-832M
KTC242-1032	10/32	KTC242-1032M
KTC242-1024	10/24	KTC242-1024M
KTC242-1/4-20	1/4-20	KTC242-1/4-20M
KTC242-1/4-28	1/4-28	KTC242-1/4-28M
KTC242-M4*	M4*	KTC242-M4M*
KTC242-M5*	M5*	KTC242-M5M*
KTC242-M6*	M6*	KTC242-M6M*

Model #	Mandrel Size
KTC243-5/16-18	5/16-18
KTC243-5/16-24	5/16-24
KTC243-3/8-16	3/8-16
KTC243-3/8-24	3/8-24
KTC243-1/2-13	1/2-13
KTC243-1/2-20	1/2-20
KTC243-M8*	M8*
KTC243-M10*	M10*

KTC690 Series Hi-Lok® Installation Tool Assemblies



The KTC690 series Hi-Lok® Installation Tool Assemblies is a three piece kit that consists of a KTC692 1/4" sq. dr. reversible ratchet with a through hole, 1/16" plastic handle hex key and a 1/4" sq. dr. socket. Used for the more common Hi-Lok™ fasteners. The socket is held to the square drive with a set screw to eliminate FOD.

Model #	Socket Head Width	Hex Key Width	Square Drive Size
KTC690-3/16	3/16" (0.187)	1/16" (0.062)	1/4
KTC690-7/32	7/32" (0.218)	1/16" (0.062)	1/4
KTC690-1/4	1/4" (0.250)	1/16" (0.062)	1/4
KTC690-9/32	9/32" (0.281)	1/16" (0.062)	1/4
KTC690-5/16	5/16" (0.312)	1/16" (0.062)	1/4
KTC690-11/32	11/32" (0.343)	1/16" (0.062)	1/4

KTC825 Hi-Lok® Hand Installation & Removal Kit

The KTC825 Hi-Lok® Hand Installation and Removal 17 piece kit includes everything you need to easily install and remove -5 (5/32"), -6 (3/16"), -8 (1/4") & -10 (5/16") Hi-Lok® style fasteners.

Kit Includes:

- ATHR250 1/4" square drive hand ratchet, 72 teeth, (5 degree arch between clicks) with through hole - OMSK3581-5, OMSK3581-8, OMSK3581-10.
- 4 ea. Hi-Lok collar removal sockets for dash 5,6,8,& 10 size collars.
- 9 ea. Anti FOD sockets with set screws (5/32, 3/16, 7/32, 1/4, 9/32, 5/16, 11/32, 3/8 & 7/16).
- 3 ea. Handi-Hex keys with replaceable blades for all 5/32", 3/16", 1/4" (-5, -6, -8) Hi-Lok pins.
- Rugged case.



KTC677 Hi-Lok® Collar Remover Plier

The KTC677 will remove all standard Hi-Lok® collars. Made from hardened steel featuring diamond cut jaw pattern for a sure grip and cushion grip handles.



KTC2-1522 Pin Protrusion Gauge

The KTC2-1522 Pin Protrusion Gauge is manufactured for use on Hi-Lok® and Hi-Tigue® fasteners. The gauges will determine if the correct length pin has been installed. This is a complete set that includes gauges for -5 to -12 fasteners.



Toll Free 866.760.6931 Local 734.947.8100 Fax 734.947.8101 Email Sales@KlassicToolCrib.com

KAT112 Pistol Grip “Palm” Drill Motor - 1/4”



The KAT112 is a small, lightweight Pistol grip air drill with plenty of power. Designed to fit in the palm of your hand. High quality, designed for professional use. Features include progressive throttle, rotatable rear exhaust, 1/4” air inlet, 3/8” x 24 threaded spindle, 1/4” chuck and key, smooth quiet operation and one-year warranty.

Model #	Style	RPM	Chuck Size	Length	Weight
KAT112	Non-Reversible	3000	1/4”	6”	1.76 lbs

KAT112-Mini Pistol Grip “Palm” Drill Motor - 1/4”



The KAT112-Mini is one of the smallest drills on the market with a short body length to fit into tight areas. Lightweight air drill with plenty of power. Short mini design fits in the palm of your hand. High quality, designed for professional use. Features include progressive throttle, rear exhaust, 1/4” air inlet, 3/8” x 24 threaded spindle, 1/4” chuck and key, smooth quiet operation and one-year warranty.

Model #	Style	RPM	Chuck Size	Length	Weight
KAT112-Mini	Non-Reversible	2800	1/4”	5 5/8”	1.30 lbs

KAT112R-Mini Pistol Grip “Palm” Drill Motor - Reversible 1/4”



The KAT112R-Mini is one of the smallest reversible drills on the market with a short body length to fit into tight areas. Lightweight air drill with plenty of power. Durable composite motor housing. Features include a forward reverse switch and a two speed trigger, rear exhaust, 1/4” air inlet, 3/8” x 24 threaded spindle, 1/4” chuck and key, smooth quiet operation and one-year warranty.

Model #	Style	RPM	Chuck Size	Length	Weight
KAT112R-Mini	Reversible	2600	1/4”	5 13/64”	1.30 lbs

Jacobs® Chuck - Superior Drill Chucks

Superior grip and accuracy have made Jacobs® the choice of drill users for more than 100 years. Jacobs is the world’s premier manufacturer of industrial drill chucks. All drill chucks shown are thread mounted. Please call for taper mounted chucks and other Jacobs® products.

Jacobs® Multi-Craft® Duty Drill Chucks



Model #	Capacity (min-max)	Threaded Mount	Uses Key
SM1G61	0.028 - 0.250”	3/8” - 24	KG1
SM4G61	0.063 - 0.375”	3/8” - 24	KG1
22BA-3/8	0.063 - 0.375”	3/8” - 24	KK
22BA-1/2	0.063 - 0.375”	1/2” - 20	KK
24BA-3/8	0.063 - 0.500”	3/8” - 24	KK
26BA-1/2	0.063 - 0.500”	1/2” - 20	KK



Jacobs® Hand-Tite® Keyless Drill Chuck

Model #	Capacity (min-max)	Threaded Mount	Sleeve Type
31965	0.032 - 0.375”	3/8” - 24	2 pc
31377	0.062 - 0.500”	3/8” - 24	2 pc
32000	0.032 - 0.375”	1/2” - 20	1 pc

Toll Free 866.760.6931 Local 734.947.8100 Fax 734.947.8101 Email Sales@KlassicToolCrib.com

KTC276 Drill Stops

Used to control the drill depth and protect the surface material from being damage by the drill chuck. Helps eliminate the worry of drilling too deeply into tubing, wiring, etc. The spring loaded drill stop is designed to help keep the user from damaging the surface material when the drill bit breaks through. Each units includes an Allen head set screw. Please contact us for additional sizes.

Model #-Size	Hole Diameter	Drill Size	Color Code
KTC276-50	0.073	50	Black
KTC276-40	0.099	40	Zinc
KTC276-30	0.130	30	Copper
KTC276-27	0.146	27	Zinc
KTC276-21	0.161	21	Black
KTC276-16	0.179	16	Black
KTC276-12	0.191	12	Brass
KTC276-10	0.196	10	Brass
KTC276-1/4	0.257	1/4	Copper



KTC Strap Duplicators

Used to locate and align blind holes for drilling. Available in two different lengths and two different styles:

- Bushing type – the pin goes between the 2 sheets to locate the hole.
- Inverted Bushing Type – both sheets of material go between the pin and the bushing. The pin locates the hole from the bottom.

Bushing Type

Model #	Pilot Drill Size	Length
KTC266-40	#40	6 1/4"
KTC266-30	#30	6 1/4"
KTC266-21	#21	6 1/4"
KTC266-10	#10	6 1/4"
KTC266-1/4	1/4"	6 1/4"

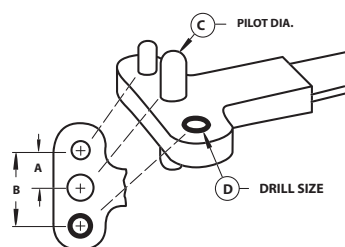
Inverted Bushing Type

Model #	Pilot Drill Size	Length
KTC267-40	#40	6 1/4"
KTC267-30	#30	6 1/4"
KTC267-21	#21	6 1/4"
KTC267-10	#10	6 1/4"
KTC267-1/4	1/4"	6 1/4"



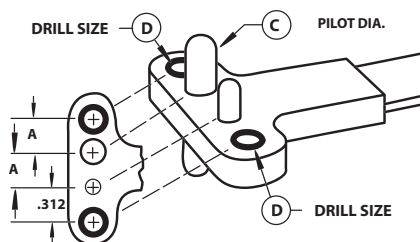
Nut Plate Drill Jigs

The KTC268 series nut plate drill jigs are designed to facilitate fast accurate drilling of rivet holes to secure standard plate nuts; also commonly known as anchor nuts or nut plates. Our drill jigs are manufactured to precise tolerances assuring consistent hole spacing and featuring an ergonomically designed handle. A spring-steel band between the handle and the head provides for additional user friendly flexibility. Additional styles available please call with requirements.



Two Lug Type - Nut Plate Drill Jigs

Model #	Screw Size	"A" Spacing	"B" Spacing	"C" Pilot Dia	"D" Drill Size
KTC268A	#6	0.3440	0.6880	0.1390	#40
KTC268B	#8	0.3440	0.6880	0.1640	#40
KTC268C	#10	0.3440	0.6880	0.1910	#40
KTC268D	1/4"	0.5000	1.0000	0.2480	#40



One Lug Type - Nut Plate Drill Jigs

Model #	Screw Size	"A" Spacing	"C" Pilot Dia	"D" Drill Size
KTC268G	#6	0.3440	0.1390	#40
KTC268H	#8	0.3440	0.1640	#40
KTC268J	#10	0.3440	0.1910	#40
KTC268K	1/4	0.3440	0.2480	#40

Toll Free 866.760.6931 Local 734.947.8100 Fax 734.947.8101 Email Sales@KlassicToolCrib.com

KAT113 - 90° Angle Drill Motor

High quality designed for professional use. Features include rear exhaust, a milled motor housing, steel alloy cylinder and rotor for long tool life. Precision machined for smooth and quiet operations.

The 90° attachment accepts all 1/4" x 28 threaded drill bits and cutters. Designed to fit into difficult areas, the angle head height is 1.06" and 0.319" side to center. Lightweight 1.90 lbs. Overall length is 10-11/16".



Model #	Style	RPM	Length	Weight
KAT113	90°	3000	10 11/16"	1.90 lbs

KAT114 - 45° Angle Drill Motor

High quality designed for professional use. Features include rear exhaust, a milled motor housing, steel alloy cylinder, and rotor for long tool life. Precision machined for smooth and quiet operations.

The 45° attachment accepts all 1/4" x 28 threaded drill bits and cutters. Designed to fit into difficult areas. Lightweight 1.90 lbs. Overall length is 10-29/32".



Model #	Style	RPM	Length	Weight
KAT114	45°	3000	10 29/32"	1.90 lbs

KAT115 - 360° Swivel Angle Drill Motor

High quality designed for professional use. Features include rear exhaust, a milled motor housing, steel alloy cylinder, and rotor for long tool life. Precision machined for smooth and quiet operations.

The 90° x 90° angle head attachment swivels 360° that is easily maneuvered allowing one to drill into areas otherwise inaccessible. Accepts all 1/4" x 28 threaded drill bits and cutters. Designed to fit into difficult areas, the angle head height is 1.06" and 0.319" side to center. Lightweight 1.90 lbs. Overall length is 10-11/16".



Model #	Style	RPM	Length	Weight
KAT115	360°	3000	10 5/8"	2.00 lbs

KTC250 - 90° Angle Drill Attachment

The KTC250 can be used with any drill chuck with a capacity of 1/4" or larger. The 90° attachment accepts all 1/4" x 28 threaded drill bits and cutters. Designed to fit into difficult areas, the angle head height is 1.06" and 0.319" side to center. Overall length is 7.2".



KTC251 - 45° Angle Drill Attachment

The KTC251 can be used with any drill chuck with a capacity of 1/4" or larger. The 45° attachment accepts all 1/4" x 28 threaded drill bits and cutters. Designed to fit into difficult areas the angle head size is 0.319" side to center. Overall length is 8".



KTC900-Long Pancake - Angle Drill Attachment

The KTC900-Long Pancake can be used with any drill chuck with a capacity of 1/4" or larger. The attachment accepts all 1/4" x 28 threaded drill bits and cutters. Designed to fit into tight difficult areas, the units reach is 3 3/4" long and the flat angle head size is 3/8" thick. The longer length has an extended reach that is 4-7/16" tall.



KTC263 Threaded Mini Chuck



Model #	Capacity (min-max)	Threaded Spindle
KTC263	1/16" - 1/4" (0.0625 - 0.2500)	1/4" x 28

Toll Free 866.760.6931 Local 734.947.8100 Fax 734.947.8101 Email Sales@KlassikToolCrib.com

KTC255 - KTC256 - KTC257 Threaded Shank Drill Bits 135° - Cobalt

- Industrial-Grade NAS Cobalt Steel - Made in the USA
- Superior red hardness for high temperature applications
- Built to NAS 965 standards
- Split Point will penetrate on contact to prevent "walking"- 135°

- Less load pressure required.
- Material Application - Steel (low and medium carbon), Alloy, Stainless, Strength Alloys
- Hard surface with High Lubricity
- Additional Fractional and Letter also available, please inquire



KTC255 Long

Model #-Size	Decimal Equivalent	Overall Length
KTC255-40	0.0980	2-1/8"
KTC255-1/8	0.1250	2-1/8"
KTC255-30	0.1285	2-1/8"
KTC255-27	0.1440	2-1/8"
KTC255-5/32	0.1562	2-1/8"
KTC255-21	0.1590	2-1/8"
KTC255-20	0.1610	2-1/8"
KTC255-16	0.1770	2-1/8"
KTC255-13	0.1850	2-1/8"
KTC255-3/16	0.1875	2-1/8"
KTC255-11	0.1910	2-1/8"
KTC255-10	0.1935	2-1/8"
KTC255-1/4	0.2500	2-1/8"
KTC255-F	0.2570	2-1/8"

KTC256 Standard

Model #-Size	Decimal Equivalent	Overall Length
KTC256-40	0.0980	1"
KTC256-1/8	0.1250	1-1/4"
KTC256-30	0.1285	1-1/4"
KTC256-27	0.1440	1-1/4"
KTC256-5/32	0.1562	1-1/4"
KTC256-21	0.1590	1-1/4"
KTC256-20	0.1610	1-1/4"
KTC256-16	0.1770	1-1/4"
KTC256-13	0.1850	1-1/4"
KTC256-3/16	0.1875	1-1/4"
KTC256-11	0.1910	1-1/4"
KTC256-10	0.1935	1-1/4"
KTC256-1/4	0.2500	1-1/4"
KTC256-F	0.2570	1-1/4"

KTC257 Stubby

Model #-Size	Decimal Equivalent	Overall Length
KTC257-40	0.0980	1/2"
KTC257-1/8	0.1250	9/16"
KTC257-30	0.1285	9/16"
KTC257-27	0.1440	9/16"
KTC257-5/32	0.1562	9/16"
KTC257-21	0.1590	9/16"
KTC257-20	0.1610	9/16"
KTC257-16	0.1770	9/16"
KTC257-13	0.1850	9/16"
KTC257-3/16	0.1875	9/16"
KTC257-11	0.1910	9/16"
KTC257-10	0.1935	9/16"
KTC257-1/4	0.2500	9/16"
KTC257-F	0.2570	9/16"

KTC Piloted Chucking & Threaded Reamers

KTC897 series Piloted Chucking Reamers are made from High Speed Steel (HSS) straight shank, straight flute, other sizes available. Please call or e-mail for details. KTC898 series Threaded 1/4 x 28 Piloted Reamers are made from High Speed Steel (HSS) straight shank, straight flute. Other sizes available. Please call or e-mail for details. For use with threaded drill motors for tight access areas.



Chucking Model #	Threaded Model #	Reamer Size	Pilot Size
KTC897-1	KTC898-1	0.1610	0.1250
KTC897-2	KTC898-2	0.1850	0.1600
KTC897-3	KTC898-3	0.1860	0.1540
KTC897-4	KTC898-4	0.1870	0.1600
KTC897-5	KTC898-5	0.1870	0.1740
KTC897-6	KTC898-6	0.1875	0.1600
KTC897-7	N/A	0.1985	0.1845
KTC897-8	KTC898-8	0.1985	0.1850
KTC897-9	KTC898-9	0.1985	0.1945
KTC897-10	KTC898-10	0.2000	0.1870
KTC897-11	KTC898-11	0.2031	0.1875
KTC897-12	KTC898-12	0.2130	0.1950

Chucking Model #	Threaded Model #	Reamer Size	Pilot Size
KTC897-13	KTC898-13	0.2130	0.1985
KTC897-14	KTC898-14	0.2140	0.1970
KTC897-15	KTC898-15	0.2158	0.2000
KTC897-16	KTC898-16	0.2160	0.1980
KTC897-17	KTC898-17	0.2188	0.2031
KTC897-18	N/A	0.2314	0.2158
KTC897-19	KTC898-18	0.2330	0.2140
KTC897-20	KTC898-19	0.2340	0.2130
KTC897-21	KTC898-20	0.2344	0.2180
KTC897-22	KTC898-21	0.2455	0.2340
KTC897-23	KTC898-22	0.2460	0.2330
KTC897-24	KTC898-23	0.2500	0.2344

Toll Free 866.760.6931 Local 734.947.8100 Fax 734.947.8101 Email Sales@KlassicToolCrib.com

KTC279 Micro Stop Countersink - Ball Bearing



The KTC279 Ball Bearing Micro Stop Countersink Cage is adjustable in increments of 0.001" for precision countersinking. Features include 1/4" shank, with 9/32" shaft travel, 1/4" x 28 thread and will accept cutters up to 5/8" diameter. Ball Bearing design provides for a smooth operation and excellent spindle support. Rated for up to 10,000 rpm use.

KTC279K Micro Countersink Kit - includes KTC279 Countersink KTC283-40, KTC283-30, KTC283-21 & KTC283-10 Countersink Cutters.

KTC280 Micro Stop Countersink - Ball Bearing - "NO MAR"



Wide Flange Style

The KTC280 Ball Bearing Micro Stop Countersink Cage includes a wide flange No Mar protective footpiece which helps to reduce scratches and tool marks to even the most sensitive areas. The unit is adjustable in increments of 0.001" for precision countersinking. Features include 1/4" shank, with 9/32" shaft travel, 1/4" x 28 thread and will accept cutters up to 5/8" diameter. Ball Bearing design provides for a smooth operation and excellent spindle support. Rated for up to 10,000 rpm use.

KTC278 Standard Micro Stop Countersink



The KTC278 Standard Micro Stop Countersink Cage is adjustable in increments of 0.001" for precision countersinking. Features include 1/4" shank, with 9/32" shaft travel, 1/4" x 28 thread, and will accept cutters up to 1/2" diameter. The small diameter is perfect for tight areas including seat tracks. Rated for up to 3,000 rpm use.

KTC277 "Mini" Micro Stop Countersink



The KTC277 is designed with a 1/4" x 28 threaded spindle which can be operated in angle drills. The "Mini" Micro Stop Countersink Cage is adjustable in increments of 0.001" for precision countersinking. Features include 1.65" in length, the 1/4" x 28 threaded spindle, 3/32" shaft travel, 1/4" x 28 thread, and will accept cutters up to 9/16" diameter. Rated for up to 3,000 rpm use.

KTC283 Integral Pilot Countersink Cutters 100° - High Speed Steel (HSS)

The KTC283 series countersink cutters are made from quality High Speed Steel. Precision ground to exacting tolerances and relieved to ensure concentricity of the countersink angle. Cutters are designed to work with all adjustable stop or micro stop countersinking units. Three flute design with a 1/4" x 28 threaded shank. They are also used with angle drills and attachments with the same specifications. Please contact for sizes not shown.



Model #	Pilot Size	Body Diameter	Model #	Pilot Size	Body Diameter	Model #	Pilot Size	Body Diameter
KTC283-40	#40	7/16"	KTC283-3/8-40	#40	3/8"	KTC283-1/2-40	#40	1/2"
KTC283-30	#30	7/16"	KTC283-3/8-30	#30	3/8"	KTC283-1/2-30	#30	1/2"
KTC283-27	#27	7/16"	KTC283-3/8-27	#27	3/8"	KTC283-1/2-27	#27	1/2"
KTC283-21	#21	7/16"	KTC283-3/8-21	#21	3/8"	KTC283-1/2-21	#21	1/2"
KTC283-20	#20	7/16"	KTC283-3/8-20	#20	3/8"	KTC283-1/2-20	#20	1/2"
KTC283-16	#16	7/16"	KTC283-3/8-16	#16	3/8"	KTC283-1/2-16	#16	1/2"
KTC283-12	#12	7/16"	KTC283-3/8-12	#12	3/8"	KTC283-1/2-12	#12	1/2"
KTC283-10	#10	7/16"	KTC283-3/8-10	#10	3/8"	KTC283-1/2-10	#10	1/2"
KTC283-3/16	3/16"	7/16"	KTC283-3/8/16	3/16"	3/8"	KTC283-1/23/16	3/16"	1/2"
KTC283-1/4	1/4"	7/16"	KTC283-3/8-1/4	1/4"	3/8"	KTC283-1/2-1/4	1/4"	1/2"

Toll Free 866.760.6931 Local 734.947.8100 Fax 734.947.8101 Email Sales@KlassicToolCrib.com

KTC284 Integral Pilot Countersink Cutters 100° - Carbide

The KTC284 series countersink cutters are made from quality High-Speed Steel HSS and are carbide tipped for a longer cutting life. They are precision ground to exacting tolerances and relieved to ensure concentricity of countersink angle. The cutters are designed to work with all adjustable stop or micro stop countersinking units. Two flute design with a 1/4" x 28 threaded shank. They are also used with angle drills and attachments with the same specifications. Please contact for sizes not shown.



Model #	Pilot Size	Body Diameter	Model #	Pilot Size	Body Diameter
KTC284-3/8-40	#40	3/8"	KTC284-1/2-40	#40	1/2"
KTC284-3/8-30	#30	3/8"	KTC284-1/2-30	#30	1/2"
KTC284-3/8-21	#21	3/8"	KTC284-1/2-21	#21	1/2"
KTC284-3/8-10	#10	3/8"	KTC284-1/2-10	#10	1/2"
KTC284-3/8-1/4	1/4"	3/8"	KTC284-1/2-1/4	1/4"	1/2"

KTC Integral Pilot Countersink Cutters 82° & 120° - High Speed Steel (HSS)

The KTC countersink cutters are made from quality High Speed Steel. They are precision ground to exacting tolerances and relieved to insure concentricity of countersink angle. The cutters are designed to work with all adjustable stop or micro stop countersinking units. Three flute design with a 1/4" x 28 threaded shank. Also used with angle drills and attachments with the same specifications. Please contact for sizes not shown.

Model #	Pilot Size	Degree	Model #	Pilot Size	Degree
KTC283-82-40	#40	82°	KTC283-120-40	#40	120°
KTC283-82-30	#30	82°	KTC283-120-30	#30	120°
KTC283-82-21	#21	82°	KTC283-120-21	#21	120°
KTC283-82-10	#10	82°	KTC283-120-10	#10	120°
KTC283-82-1/4	1/4"	82°	KTC283-120-1/4	1/4"	120°



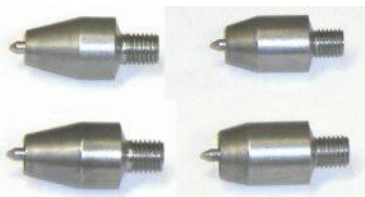
KTC575C Chatterless Countersink Cutters 100° - Non Piloted

The KTC575C 100° Chatterless threaded countersink cutter is designed with 6 flutes, 3/8" body diameter and 1/4" x 28 threads. Made from quality High Speed Steel.



KTC669 Paint Cutters

The KTC669 Paint Cutters feature a spring loaded pilot that centers the cutter over the screw head while the cutter scores the paint around it. Designed to reduce the paint chipping and flaking around screw heads. The 1/4" x 28 thread allows units to be used with rivet shavers, micro-countersink cage and angle drills. Comes in 5 different sizes or as a complete kit.



Model #	Pilot Diameter	Model #	Pilot Diameter
KTC669-4	#4	KTC669-10	#10
KTC669-6	#6	KTC669-1/4	1/4"
KTC669-8	#8		

• **KTC669K Paint Cutter Kit** (5 pieces) Includes Sizes #4, #6, #8, #10 & 1/4"

Toll Free 866.760.6931 Local 734.947.8100 Fax 734.947.8101 Email Sales@KlassicToolCrib.com

KAT300 Pneumatic Rivet Shaver

The KAT300 Heavy Duty Pneumatic Rivet Shaver will quickly and effortlessly shave off the flaws and make the rivet head or screw flush to the surface. The unit has a 0.001" increment cut adjustment and operating speed of 16,000 rpm. Included is the stabilizer bar to keep the cutter on the rivet and a standard 9/16" capacity skirt.



KAT300K Pneumatic Rivet Shaver Kit

The KAT300K Pneumatic Rivet Shaver Kit includes the KAT300 Pneumatic Rivet Shaver, 7 rivet shaver skirts, 7 solid carbide blade rivet shaver bits and comes in a handy tool bag.

- Skirt and Bit sizes: (5/16", 3/8", 7/16", 1/2", 9/16", 5/8" & 3/4")

KTC221 Rivet Shaver Bits - Carbide Blades

The KTC221 series Solid Carbide Blade Rivet Shaver Bits are designed to shave high rivets and screws that protrude above the surface creating a flush head surface. Precision cut for chatter-free cuts and the carbide blade insure a long-life. The 1/4" x 28 thread allows units to be used with rivet shavers, micro-countersink cages, and angle drills.

Rivet Shaver Bits		Optional Skirts	
Model #	Diameter	Model #	Diameter
KTC221A	5/16"	KTC220A	5/16"
KTC221B	3/8"	KTC220B	3/8"
KTC221C	7/16"	KTC220C	7/16"
KTC221D	1/2"	KTC220D	1/2"
KTC221E	9/16"	KTC220E	9/16"
KTC221F	5/8"	KTC220F	5/8"
KTC221G	3/4"	KTC220G	3/4"



KTC512-AT Chip Chaser

The KTC512-AT Chip Chaser is designed to remove metal left behind between two sheets after drilling. Simply slide the thin blade between the sheets, sweep to the side catching the chips and pull them out. The thin blade is made from high grade steel with a blunt hook. The handle is made from plastic and designed to provide a comfortable fit.



KTC233K Rivet Removal Tool

The KTC233K Rivet Removal Tool is designed to make a difficult job much easier. The tool unit is spring loaded and fully adjustable. Comes complete with 4 adjustable rivet head guides for #10, #21, #30, & #40 rivets that cup the rivet head and keep the internally mounted drill bit centered and 4 threaded extra long split point drill bits. Operates on 1/4" capacity or larger drill.

- Replacement drill bits: KTC252-21, KTC252-30, KTC252-40, KTC252-10



Rivet Hole Brush

The KTC Rivet Hole Brushes are 1/2" in diameter with piloted stainless steel brushes that are designed to clean paint and corrosion from the rivet hole area prior to riveting. This assures good rivet to metal contact and eliminates the build-up of static electricity. Available with 3/32" to 1/4" pilots, 1/4" shanks and .005" wire diameter.

- KTC595K Rivet Hole Brush Kit, includes all 5 sizes 3/32", 1/8", 5/32", 3/16" & 1/4"



Model #	Rivet Hole	Shank Size	Maximum RPM
KTC595A	3/32"	1/4"	20,000
KTC595B	1/8"	1/4"	20,000
KTC595C	5/32"	1/4"	20,000
KTC595D	3/16"	1/4"	20,000
KTC595E	1/4"	1/4"	20,000

Toll Free 866.760.6931 Local 734.947.8100 Fax 734.947.8101 Email Sales@KlassikToolCrib.com

KAT124 Pneumatic Engraving Pen

The KAT124 Engraving Pen etches a variety of materials such as steel up to RC-64, glass, plastics and wood. It also can be used for removing broken studs. 5" OAL, 5 oz., 1/4" air inlet.

- KTC506 Spare Carbide Tip for KAT124 Engraving Pen



Sioux® Force Series 5980 Pneumatic Engraving Pen

This Sioux Force Series 5980 Vibrating Pen cycles at 13,000 cycles per minute. The tool is great for marking identification on your tools and personal property. Comes with a 5' flexible air hose. Available replacement carbide tips listed below.

- 506246 - 45° standard tip
- 506245 - 30°
- 506244 - 15°



KTC Safety Wire Twisters - Spring Return

The KTC Spring Return Safety Wire Twisters are widely used to "lock" nuts, bolts, oil filters, etc., in place preventing them from loosening or falling off. Very simple to use. Lock the pliers on both ends of the wire and pull the knob to spin the twister. The wire twisters include a handy wire cutter built right in.

- KTC286 Spring Return Safety Wire Twister - 9" OAL
- KTC285 Mini Spring Return Safety Wire Twister - 6" OAL



KTC286 Shown

KTC Aircraft Safety Wire

The KTC Aircraft Quality Safety Wire is made of MS-20995C stainless steel and conforms to mil spec W6713. This wire is used widely in aviation and automotive applications.

- KTC287 Safety Wire 0.032" diameter - used on oil filters, nuts, bolts, etc.
- KTC288 Safety Wire 0.041" diameter - used on propellers, turn buckles, etc.
- KTC289 Safety Wire 0.020" diameter - used on electrical connectors, instruments, etc.



KTC490 Tool Pouch

The KTC490 Military Style Tool Pouch is made of heavy duty material. An ideal pouch to carry your tools on the job, in the shop, aircraft, car or boat. It has a heavy duty zipper a full length pocket on both the inside and outside, reinforced bottom and heavy carrying straps.



KTC565 Aluminum Mini Vacuum



The KTC565 Aluminum Mini Vacuum is designed as a small light weight tool with plenty of power. Vacuum uses 90 to 120 psi and creates enough vacuum to pick up nuts, bolts, rivets, chips, dust etc. A great shop tool as well as a handy vacuum to clean up in the cock pit or in other confined areas 1/4" air inlet.

KTC582 Cannon Plug Plier



The KTC582 Cannon Plug (electrical connector) Plier is designed to efficiently remove A-N (cannon plug) connectors without crushing them. It's adjustable from 3/4" to 2-1/2".

- KTC582A Replacement Jaws

KTC657 Lead Cutter



The Plato shear is the electronic industry's most popular lead cutter. The thin profile is designed for those hard to reach areas in electronic assembly. All Plato shears require 50% less operator effort and have an extended cutting life because they shear rather than pinch. The operators love them because of their lightweight, comfort, durability, ease of operation and precision. Flush cuts components leads to 18A WG copper wire, 5.15" OAL, 1.8 oz.

Temporary “Cleco” Fasteners - Plier Operated

Temporary fasteners are commonly used to hold two sheets together while other tasks are being performed. They will prevent material from shifting positions during lay out and drilling. Units are spring loaded and made from a durable steel plated body. Temporary fasteners are available in a variety of diameters and grip accommodations. Each size is color-coded for easy identification. Use with KTC214 Plier for installation.



Standard Style Fasteners - Plier Operated

Model #	Color	Hole Diameter	Drill Size	Grip Range	Body Length
KTC215	Zinc	3/32"	#40	0-1/4"	2 1/4"
KTC216	Copper	1/8"	#30	0-1/4"	2 1/4"
KTC217	Black	5/32"	#21	0-1/4"	2 1/4"
KTC218	Brass	3/16"	#10	0-1/4"	2 1/4"
KTC219	Copper	1/4"	1/4"	0-1/4"	2 1/4"



Stubby Style Fasteners - Plier Operated

Model #	Color	Hole Diameter	Drill Size	Grip Range	Body Length
KTC457	Zinc	3/32"	#40	0-1/4"	1 3/4"
KTC458	Copper	1/8"	#30	0-1/4"	1 3/4"
KTC459	Black	5/32"	#21	0-1/4"	1 3/4"
KTC460	Brass	3/16"	#10	0-1/4"	1 3/4"

Side Grip Clamps - Plier Operated

Minimizes surface marring and is designed to work at the edge of the work area. Ideal for holding together work pieces of all types. Especially during bonding, sealing or gluing operations. Spring loaded to eliminate over-tightening issues. Use with KTC214 Plier.

Model #	Reach	Gap	Body Length
KTC224	1/2"	0 - 1/2"	2 3/16"
KTC225	3/4"	0 - 1/2"	2 3/16"



KTC907 Tension Clamp Plier Operated

The KTC907 Tension Clamp is a spring loaded clamp that has an increased gap and reach. Use in place of regular c-clamps. All steel construction. Use with KTC214 Plier.

Model #	Reach	Gap
KTC907	1 3/4"	0 - 1/2"



KTC214 Cleco Plier



The KTC214 installs all brands of cleco fasteners and comes with plastic grips for comfort.

Toll Free 866.760.6931 Local 734.947.8100 Fax 734.947.8101 Email Sales@KlassicToolCrib.com

Wing-Nut Body Fasteners - Manual Power Operated

Hand operated fasteners for structures requiring limited fastening or limited access. Clamping forces are operated controlled and can range from 50 to 300 pounds. Very easy to operate, color-coded for quick hole-size identification. Additional sizes available.

Wing-Nut Body Fasteners - Manual Operated



Model #	Color	Hole Diameter	Drill Size	Grip Range	Body Length
KTC465	Zinc	3/32"	#40	0-1/2"	2 7/8"
KTC466	Copper	1/8"	#30	0-1/2"	2 7/8"
KTC467	Black	5/32"	#21	0-1/2"	2 7/8"
KTC468	Brass	3/16"	#10	0-1/2"	2 7/8"

Wing-Nut Body Long Fasteners - Manual Operated



Model #	Color	Hole Diameter	Drill Size	Grip Range	Body Length
KTC469	Zinc	3/32"	#40	0-1"	3 7/8"
KTC470	Copper	1/8"	#30	0-1"	3 7/8"
KTC471	Black	5/32"	#21	0-1"	3 7/8"
KTC472	Brass	3/16"	#10	0-1"	3 7/8"

Hex-Nut Body Fasteners - Power Operated

Used for clamping two or more pieces of structure at desired clamp load. Spin-free design allows nut to completely back off stud while remaining intact on stud body. Easily installed and removed with Klasic Tool Crib pneumatic hex nut drivers. Additional sizes available.

Hex-Nut Body Fasteners - Power Operated



Model #	Color	Hole Diameter	Drill Size	Grip Range	Body Length
KTC473	Zinc	3/32"	#40	0-1/2"	2 11/16"
KTC474	Copper	1/8"	#30	0-1/2"	2 11/16"
KTC475	Black	5/32"	#21	0-1/2"	2 11/16"
KTC476	Brass	3/16"	#10	0-1/2"	2 11/16"

KTCWND Draw Cleco Installation Tool



The KTCWND is designed to install both Hex-Nut and Wing Nut Draw type fasteners. Use with any power tool with at least a 1/4" capacity or in a power screwdriver with a 1/4" hex chuck.

KTC906 Handi-Clamp - Manual Operation

The KTC906 Handi-Clamp is versatile over a complete range of surfaces, shapes, materials and thicknesses. Features include a rugged steel construction, with a controlled power grip for temporary clamping action. Removable rubber pads.

Model #	Reach	Gap	Body Length
KTC906	3/4"	0-5/32"	3 1/4"



Toll Free 866.760.6931 Local 734.947.8100 Fax 734.947.8101 Email Sales@KlasicToolCrib.com



Toll Free 866.760.6931 Local 734.947.8100 Fax 734.947.8101 Email Sales@KlassicToolCrib.com

Copyright 2018 by Klassic Tool Crib - 9350 Harrison, Romulus, Michigan 48174. All rights reserved.